



LIHUEL
CONSTRUYENDO SUEÑOS



CATALOGO 2024

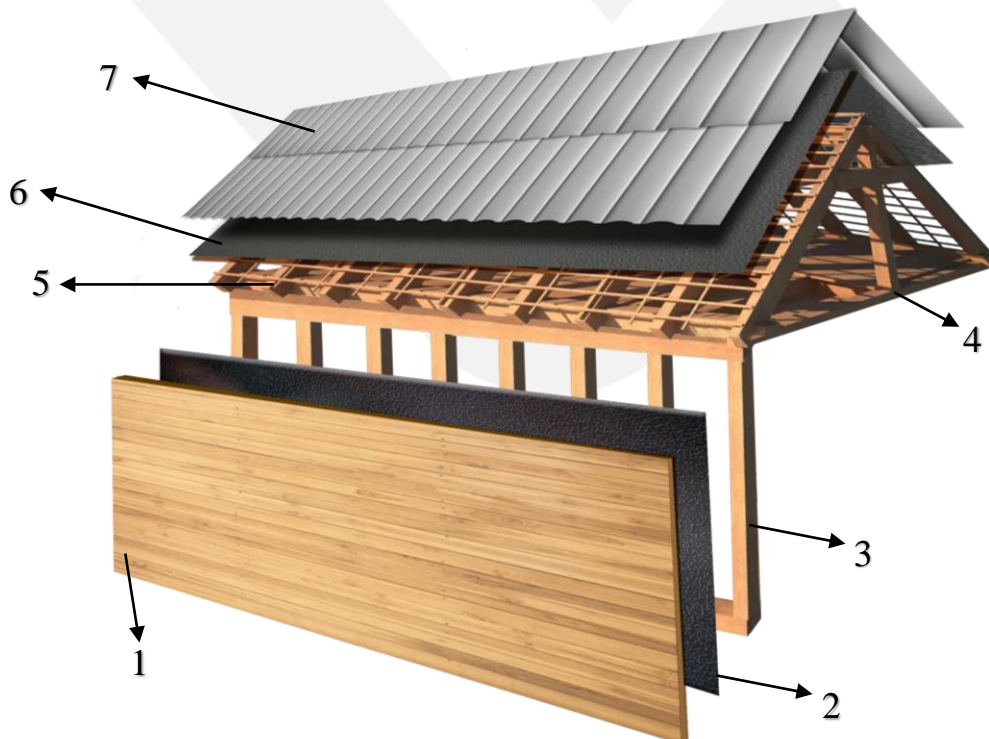




¿COMO SE COMPONE EL KIT INICIAL?

1. Forro exterior en madera de 1" de espesor, medialuna o tinglado a elección del cliente.
2. Membrana Hidrofuga como barrera de vapor.
3. Tabiquería Interior y Exterior en 2x3, altura 2.40mts y separación a 60cm con cadeneta. (Incluye kit de yeso cartón 10mm para revestir una cara interior)
4. Cerchas dobles en Pino Bruto 1x4 con separación a 1mts.
5. Tabla Costanera Pino 1x4, distribución cada 40cm.
6. Membrana Hidrofuga para techumbre, como barrera de vapor.
7. Zinc acanalado 0,35mm espesor + Caballete galvanizado para cumbrera.

!! ADICIONALES DISPONIBLES !!









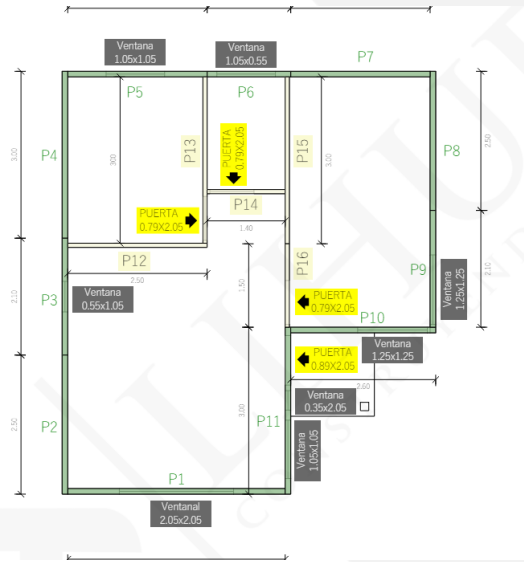
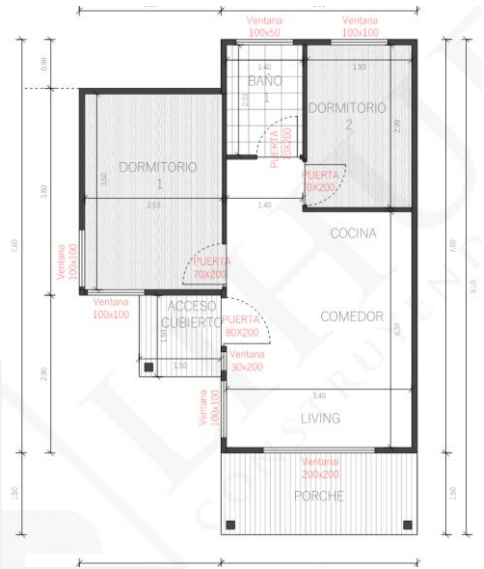
Línea Olivo

Inspirados en la arquitectura propia del sur de nuestro país, ponemos a su disposición una línea completa de casas cómodas, de fácil circulación y disponible con mejoras únicas como porche frontal, vigas a la vista y terrazas espaciosas. Estas casas son el resultado de la combinación perfecta entre modernidad y diseño tradicional.



Modelos desde 36m² hasta 120m².

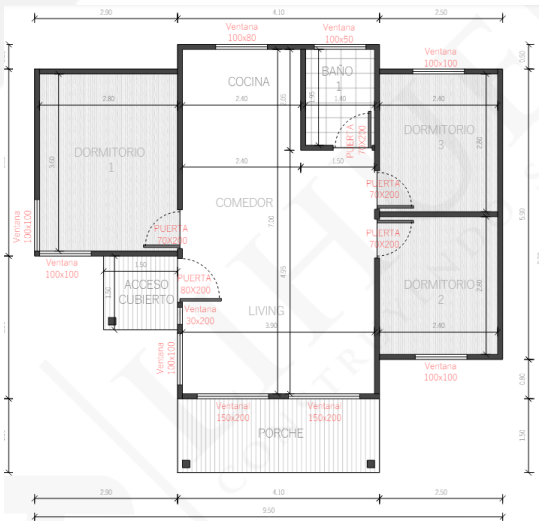
Olivo 36m²

-  **2 Habitaciones**
-  **1 Baño**
-  **Living - Comedor**
-  **Cocina**







Olivo 43m²

-  **2 Habitaciones**
-  **1 Baño**
-  **Living - Comedor**
-  **Cocina**







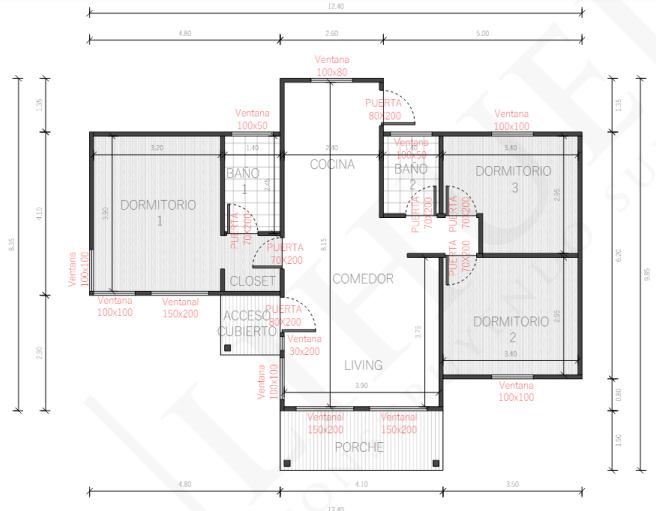
Olivo 54m²

-  **3 Habitaciones**
-  **1 Baño**
-  **Living - Comedor**
-  **Cocina**







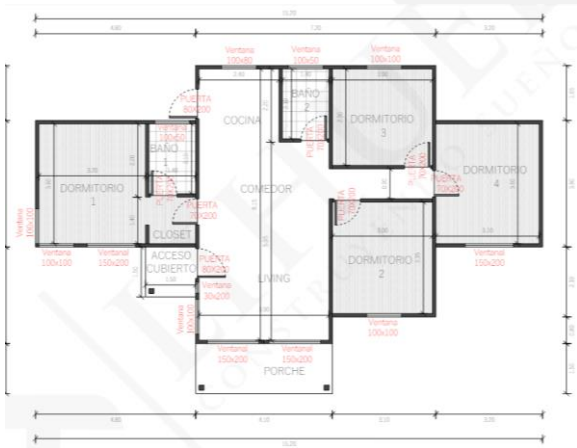
Olivo 72m²

-  **3 Habitaciones**
-  **2 Baños**
-  **Living - Comedor**
-  **Cocina**









Olivo 88m²

-  **4 Habitaciones**
-  **2 Baños**
-  **Living - Comedor**
-  **Cocina**



Olivo 120m²

-  **4 Habitaciones**
-  **2 Baños**
-  **1 Walk in Closet**
-  **Zona de Lavado**
-  **Living - Comedor**
-  **Cocina**

